

LEADERSHIP ORLANDO CLASS 97 DIRECTORY



Build a Brilliant Region
Amplify Orlando's Story
Champion Regional Priorities
Empower Community Leaders
Strengthen Orlando's Economy

OUR MISSION TO CREATE BROAD-BASED PROSPERITY

Developing regional leaders is important to the future success of the Orlando region. That's why regional leadership is a primary focus of the Orlando Economic Partnership (the Partnership). Leadership Orlando, America's largest community leadership program, recruits, cultivates and encourages established and emerging leaders from across the seven-county region to better serve Central Florida. Through this one-of-a-kind experiential curriculum, you will explore regional assets, gain insight into the hottest topics from local leaders and connect with other professionals.



I'm both honored and humbled by being asked to chair Leadership Orlando Class 97. It is an amazing opportunity, but also a tremendous responsibility to follow in the footsteps of so many incredible community leaders. Through Class 97, I am hoping to shine the light on the many challenges and initiatives that affect the most vulnerable members of our community - our children and our elderly. We have all been the former, and one day will be the latter."



CHAIR
Pamela Landwirth
President & CEO
Give Kids The World Village



Jeff Aaron
Associate
GrayRobinson, P.A.



Jari Alvarez
VP of Sales Services
Hilton Grand Vacations



Tajiana Ancora-Brown
Director of External
Affairs
Walt Disney Parks
& Resorts



Karim Arja
Client Advisor
Seaside National Bank
& Trust



Kim Belardinelli
Vice President,
Commercial
Relationship Manager
TD Bank



Rod Bitterling
Senior Solutions
Consultant
North American Office
Solutions/Dex Imaging



JB Boonstra
Director of Community
Health
AdventHealth



Dr. Taylor Bousfield
Exceptional Student
Education Teacher
Orange County Public
Schools



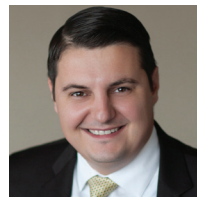
Kevin Brown
Booking Department
Manager
City of Orlando



Kristin Caborn
Senior Planning
Manager
GAI Consultants, Inc.



John J. Callahan, PhD
Vice President of
Technology
BRIDG



Ledian Cama
Tax Manager
CliftonLarsonAllen LLP



Karen Case
Human Resources
Director
LEGOLAND Florida
Resort



Dana Casey
Communications &
Public Affairs
Lockheed Martin
Missiles and Fire
Control

LO CLASS 97 // CONTINUED



Allyson Chiappa
Executive Vice President
Epoch Residential



James Christie
Vice President,
Hospitality & Parking
Bags Inc.



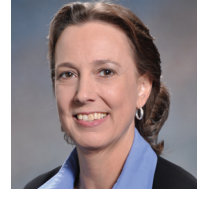
Erika Cooper
Vice President,
Advertising
Orlando Sentinel



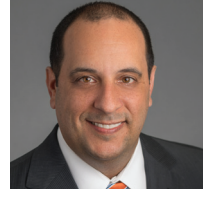
James Cooper
Mission Support
Division Chief
Air Force Agency for
Modeling & Simulation



Dan Covelli
Executive Officer
Naval Air Warfare
Center Training
Systems Division



Molly Crouch
Director of
Sustainability
Centerplate



Sam Curro
Director of Capital
Projects/Construction
Loews Hotels at
Universal Orlando



Earnest DeLoach, Jr.
Division Counsel
Balfour Beatty
Construction



Christie Hyde DeNave
Senior Media Relations
Consultant
Florida Blue



Marie Dennis
Assistant Director
of Finance
Greater Orlando
Aviation Authority



Sean DeVaney
Sales Engineer
Innovative Support
Systems, Inc.



Rachel Dobbs
Client Executive
Hylant



Paul Drayton
Vice President,
Commercial Banker
JPMorgan Chase



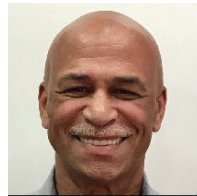
Kristina Duncan
Managing Director
Charles Schwab & Co.,
Inc.



Ronny Edwards, Jr.
Shareholder
Lowndes



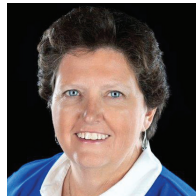
Brad Ehrhardt
NAWCTSD 6.0
Logistics Site Lead/
Director
Naval Air Warfare
Center Training
Systems Division



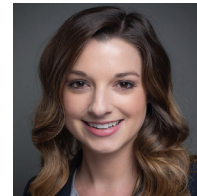
Derek Frederickson
Territory General
Manager
Coca-Cola Beverages
- Florida



Manuel Garcia
Vice President of
Operations
ZAZA New Cuban
Diner



Peggy Givens
Associate Director for
Patient Care Services
VA Medical Center -
Orlando



Claire Goodwin
Consultant, Value
Based Care - Strategy
Orlando Health



Carolyn Haslam
Attorney
Akerman, LLP



Gary Lee Heath
Director of Business
Analysis
Massey Services, Inc.



Michelle Heatherly
Director of Operations,
Strategic Development
Demetree Global



Kate Henry
Vice President,
Marketing & Strategic
Communications
Seminole State
College of Florida



Lindsay Hodges
Director, Reputation
Management
Wyndham Destinations



Erika Hughes
Entitlements Manager
VHB



Jason Human
Client Manager
PFM Asset
Management, LLC



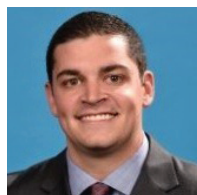
Veronica Jhon
Audit Manager
Withum



Ed Kania
VP, Business &
Finance/Treasurer
Rollins College



Darren L'Appanna
Asst. Manager,
Business & Air Service
Development
Greater Orlando
Aviation Authority



Chuck Lichty
Director, Season Ticket
& Plan Sales
Orlando Magic



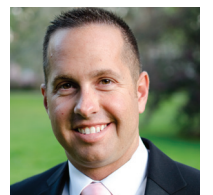
Esteban Lopez
Director of Corporate &
Academic Outreach
Beacon College



Jacob Lucky
Project Executive
FINFROCK



Loren Luedeman
Senior Project Manager
Barton Malow
Company



Johnny Lynaugh
Vice President
Regions Bank



Mike Manuchia
Manager of Consulting Services
 Restaurant Partners Inc.



Lindsay Spartz Mason
Regional Director of Advocacy and Public Policy
 Florida Realtors



Mary Beth McAliley
Senior Project Manager
 Interior Contract Services Inc.



Mike McFadden
Coordinator, LEAD Scholars Academy
 University of Central Florida



Tajuan Mills
Sr. VP - Wealth Team Director
 BB&T - Branch Banking & Trust Co.



Khalid Muneer
President
 Jupiter Properties, Inc.



Tanya Naylor-Molea
Security & Emergency Manager
 Reedy Creek Improvement District



Marta Negron
Senior Vice President, Orlando Regional Manager
 MIDFLORIDA Credit Union



Paul Oppedisano
VP, Premium Services
 Walt Disney Parks & Resorts



Logan Opsahl
Attorney
 Callan Law Firm, P.A.



Jason Passley
Treasury Management Consultant
 PNC



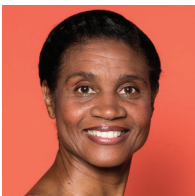
Pete Pelletier
Assistant IT Director
 Greater Orlando Aviation Authority



Michael Quinn
Partner
 Shutts & Bowen LLP



Janet Ray
Vice President, Marketing
 Give Kids The World Village



Donnette Reid-King
Head of Team Member Services
 ZIO



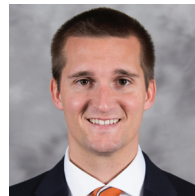
Rafael Restrepo
Regional Sales Director
 Kavaliro



Frances Rios
Founder & CEO
 Frances Rios International



Jordan Ross
Preconstruction Manager
 Hoar Construction, LLC



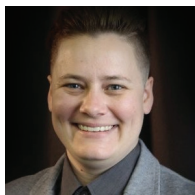
Brad Runyan
Senior Preconstruction Manager
 Brasfield & Gorrie, LLC



Scott Shedek
Senior Project Manager
 Greater Orlando Aviation Authority



Heather Shubirg
Executive VP
 Team Volusia EDC



Abby Silverman
Operations Director
 Hope and Help Center of Central Florida, Inc.



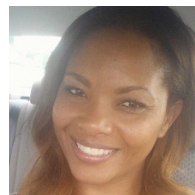
Candice Simmons
Community Relations Senior Consultant
 Corporate Philanthropy & Community Relations Wells Fargo



Brian Stensrud
Senior Scientist
 SoarTech



Alisha Stokes
RN - Corporate Chest Pain Coordinator
 Orlando Health



Dianne Thomas-Roberts
President
 Redd Ash Technologies Co.



Rebecca Toolsie
Finance Team Leader
 Redd Ash Technologies Co.



Tim Traver
Director, Strategic Planning
 Orlando Health



Linda Valenti
Business Unit Controller
 Gilbane Building Company



Mandy Weitknecht
VP, Business Development
 Skanska USA Building, Inc.



Chris Whitney
Vice President
 Huitt-Zollars



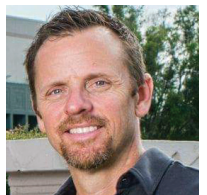
Kelsey Will
Account Executive
 Clear Channel Outdoor



Justin Williams
COO
 Orlando Health Arnold Palmer Hospital for Children



Dr. Haley G. Winston
Assistant Director
 University of Central Florida



William Wold
ENG Manager
 CenturyLink



Steve Wortman
VP, Middle Market
Relationship
Manager
Fifth Third Bank

ORLANDO ECONOMIC PARTNERSHIP LEADERSHIP ORLANDO SUPPORT STAFF



Tim Giuliani
President & CEO
Orlando Economic
Partnership



Dale Brill
SVP, Research &
Foundation for Orlando's
Future
Orlando Economic
Partnership



Danielle Permenter
Sr. Director, Regional
Talent Initiatives
Orlando Economic
Partnership



Lisa Winkelbauer
Director, Leadership
Orlando
Orlando Economic
Partnership



@LeadershipORL
#LO97

If you are interested in an upcoming Leadership Orlando class, contact:

Danielle Permenter
Senior Director, Community Development
danielle.permenter@orlando.org
P/ 407.835.2444

301 E. Pine Street, Suite 900 // Orlando, Florida 32801 // leadershiporlando.org

About the Orlando Economic Partnership

The Orlando Economic Partnership works to provide the Orlando region with quality jobs, economic growth, broad-based prosperity and a sustainable quality of life. It is a not-for-profit, public/private partnership representing seven counties – Brevard, Lake Orange, Osceola, Polk, Seminole and Volusia – as well as the City of Orlando.